



# Product Catalog



# *hair*

INTRODUCTION	2
SNAP CAP®	8
EDUCATIONAL MANNEQUINS	14
PREMIUM MANNEQUINS	18
HAIR WEFTS & SWATCHES	21

# *tools*

CUTLERY	22
COMBS & BRUSHES	28
RODS & ROLLERS	32
COLOR TOOLS	36
CLASSROOM TOOLS	37
THERMAL TOOLS	38
WEARABLES	40
POUCHES & BAGS	42
TRIPODS & HOLDERS	46
POLICIES	48

*“An artist needs inner confidence and self-control  
and yet must dwell within a real world and be  
conscious of its interests and requirements.”*

- Johannes Itten (1888-1967)

## IT STARTED WITH A ● ● *Vision*

### **THOUGHTS—IDEAS—VISIONS**

It all begins in the mind. Whether creating a hair design, sculpture, painting or a company, nothing happens until someone thinks of it. My own vision for my life's work—and of the creation of Pivot Point—came when I discovered The Bauhaus, the most celebrated art school of modern times. Its aim, as is ours, was to train craftspeople to elevate their skills to a higher level of artistic creativity. By adapting the Bauhaus philosophy to the craft of cosmetology, Pivot Point provides the educational structure, as well as high-performance, high-quality hair and tool products to develop true hair designers.

I am extremely proud that Pivot Point has, for over 45 years, provided for millions of designers—designers who create in the realm of hair design, esthetics, and nails, who satisfy millions of clients in salons throughout the world.

I invite you to explore with us the uniqueness of Pivot Point International, Inc. Join our artistic community. Embark on your own journey of lifelong learning. Let us help empower you to reach the highest levels of hair design, esthetics and nails. Together we will increase the well-being of all your customers.

Leo Passage  
Founder, Pivot Point International, Inc.



WELCOME 3







Courtesy of DF 282

### **THE PIVOT POINT DIFFERENCE**

Pivot Point's attention to detail and the consistent delivery of high-quality mannequins offer you the best possible product on the market.

The hair is collected from China and India, then grouped according to length and processed to comply with statutory regulations. Hair is disinfected four times, starting at hair selection and continuing through packaging, protecting users from microbes during the shipment of hair goods. The hair then undergoes several chemical treatments to achieve different levels of color and/or texture depending on the intended use. During the chemical procedures, measures are taken to retain the hair's moisture and elasticity in order to preserve the human, life-like quality.



*Structure refers to the hair length arrangement used to identify all hair components and mannequins. Length arrangements are designed for educational purposes to use with the various exercises throughout the course. The illustrations and descriptions on these pages will help you determine which length arrangement(s), or structure(s), best meet your educational needs..*

# structure

## LENGTH ARRANGEMENT

### SOLID LENGTH ARRANGEMENT

The long lengths in this structure are in the interior, falling to the same level as the shorter lengths at the perimeter. This structure is excellent for teaching a variety of cutting, color and perm techniques for “bobs” as well as long hair techniques.

### GRADUATED LENGTH ARRANGEMENT

The longest lengths of this structure are in the interior, gradually decreasing in length to the shorter lengths in the perimeter. This structure is specifically designed for men’s sculpture, color, perm and other techniques.

### INCREASE-LAYERED LENGTH ARRANGEMENT

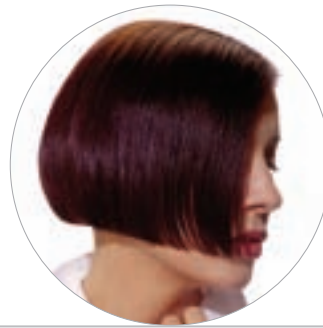
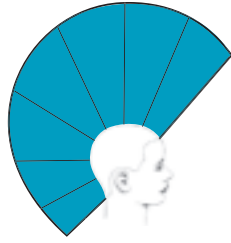
The length progresses in this structure from short in the interior to long at the perimeter. The increase-layered structure is ideal for layered cuts, color and perm techniques for longer, layered hair, as well as cuts performed from the top of the head to the perimeter. A minimum of 8” (20 cm) on the top and 14” (35 cm) length in the nape is recommended.

### UNIFORMLY LAYERED LENGTH ARRANGEMENT

The lengths in this structure are consistent around the shape of the head. This structure is ideal for blow-drying, ironing, perming, wrapping and design techniques, as well as performing medium-to-short cuts and designs.



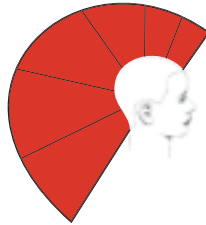
**SOLID**  
LENGTH  
ARRANGEMENT



**GRADUATED**  
LENGTH  
ARRANGEMENT



**INCREASE-LAYERED**  
LENGTH  
ARRANGEMENT



**UNIFORMLY LAYERED**  
LENGTH  
ARRANGEMENT



HAIR 7

HAIR TYPE chinese, indian, indonesian, tightly-curved, goat and bio-hair



COLOR LEVEL black, dark, medium, light, white and gray



DENSITY competition, high, medium and low



HEAD SIZE large, medium and small







*Recipient of the 2008 Intercoiffure  
“Visionary of the Year” award*

*educationally* INSPIRED  
ENVIRONMENTALLY *conscious*



# Snap Cap®

---

**One headform, endless educational possibilities...**

Whether perfecting your cutting, coloring, texture or finishing techniques, the internationally patented Snap Cap gives you the highest quality hair you've come to expect from Pivot Point International, without the waste of traditional mannequins.

The revolutionary Snap Cap system offers a complete range of color levels, lengths and textures. The beauty of the Snap Cap is its reusable headform. Simply choose the cap that is right for the skill you are practicing, saving space for you and reducing waste in landfills. Because we don't have to ship several heads, the carbon impact to the planet from shipping is greatly reduced.



HAIR 9



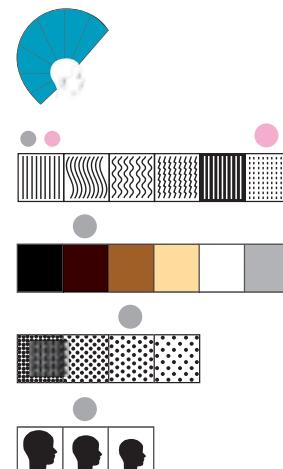
HEADFORM  
Code - CS-HMMooooL (light)  
Code - CS-HMMooooD (dark)  
PLAIN CAP  
Code - CS-CAP (light)  
DESIGN CAP  
Code - CS-DCAP

*“The Snap Cap gives me a definite advantage of marketing the Pivot Point difference—with its superior hair quality, beautiful features and space-saving and environmentally conscientious design—these features all appeal to today’s student.”*

—RON MAZIARZ, EMPIRE BEAUTY SCHOOLS



FULL SOLID EXTRA LONG ●●  
Length (Front to Back)  
20"-12"  
Code - CS-FMMSCDLL-XLM



RECTANGLE SOLID ●  
Length (Front to Back)  
14"-6"  
Code - CS-RMMSCDML



PROFILE SOLID ●  
Length (Front to Back)  
14"-8"  
Code - CS-PMMSCDLL



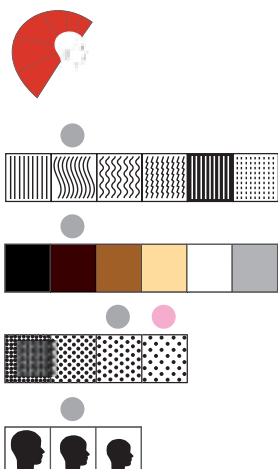
FULL SOLID ●  
Length (Front to Back)  
14"-6"  
Code - CS-FMMSCDLL

## ECO-FRIENDLY

*83% of 18- to 25-year-olds will trust a company more if it is socially/ environmentally responsible.\**

*Take part in reducing the amount of environmental waste and set yourself apart from the competition by using the caps and reusable headform.*

\*USA TODAY - "Gen Y Gets Involved", by Sharon Jayson



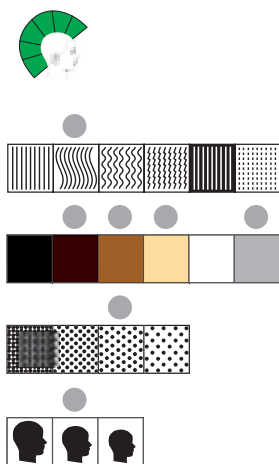
FULL INCREASE ●●  
Length (Front to Back)  
8"-14"  
Code - CS-FMMIIDLL



RECTANGLE INCREASE ●  
Length (Front to Back)  
8"-14"  
Code - CS-RMMIIDML



PROFILE INCREASE ●●  
Length (Front to Back)  
8"-14"  
Code - CS-PMMIIDLL



QUADRANT ●  
Length (Front to Back)  
8"  
Code - CS-FMMUZZML-4P

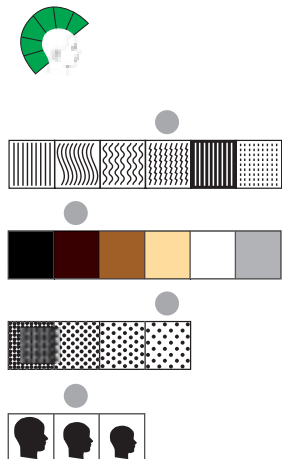
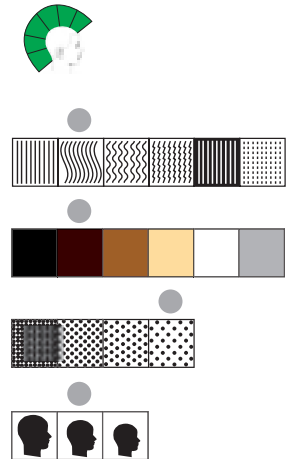




FULL UNIFORM ●  
Length (Front to Back)  
10"  
Code - CS-FMMUIDLL-M



SILHOUETTE UNIFORM ●  
Length (Front to Back)  
10"  
Code - CS-LMMUIDLL-M



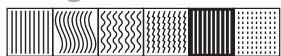
RECTANGLE  
TIGHTLY CURLED ●  
Length (Front to Back)  
10"  
Code - CS-RMMUIDLD-TC



PROFILE  
TIGHTLY CURLED ●  
Length (Front to Back)  
10"  
Code - CS-PMUIDLD-TC



FULL  
TIGHTLY CURLED ●  
Length (Front to Back)  
10"  
Code - CS-FMMUIDLD-TC



COMING  
SOON!

FULL ●  
Length (Front to Back)  
8"-6"  
Code - CS-FLMGIDLL



NAPE ●  
Length (Front to Back)  
8"-6"  
Code - CS-NLMGIDLL



PROFILE ●  
Length (Front to Back)  
8"-6"  
Code - CS-PLMGIDLL



TOP ●  
Length (Front to Back)  
6"  
Code - CS-TLMUIDLL



HEADFORM  
Code - CS-HLMooooL-ABS (light)  
Code - CS-HLMooooD-ABS (dark)  
PLAIN CAP  
Code - CS-MCAP (light)  
DESIGN CAP  
Code - CS-MDCAP



#### **PIVOT POINT MANNEQUINS**

Pivot Point's outstandingly designed Premium Series of mannequins includes many features that are unavailable at this time anywhere else. They all feature wonderfully chiseled neck muscles and our newest, most captivating feature—life-like eyes. These eyes are made of glass and are available in a variety of colors to complement various skin tones and hair colors.

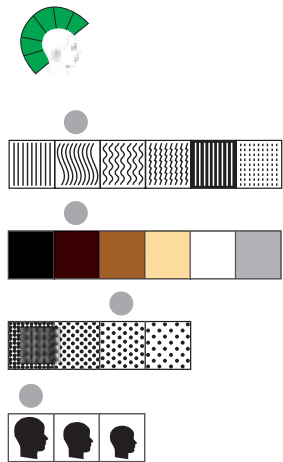
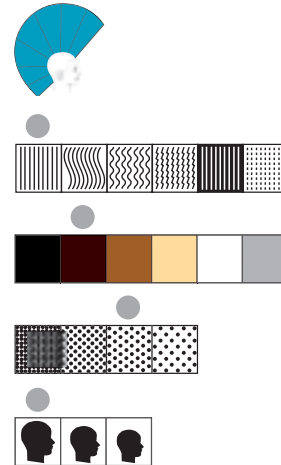
In addition to the above features, the Sabine and Fodera Series of mannequins feature shoulders, perfect for the competitor or salon display.



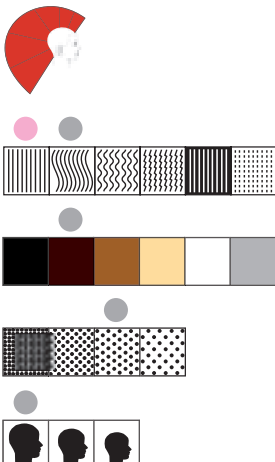
ELIZABETH ●  
Length (Front to Back)  
20"-18"  
Code - MMLSCDML-XL



JESSICA ●  
Length (Front to Back)  
16"-10"  
Code - MMLSCDML



ABIGAIL ●  
Length (Front to Back)  
10"  
Code - MMLUIDML



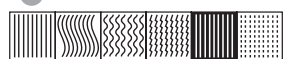
MELISSA ●  
Length (Front to Back)  
8"-10"-12"-14"  
Code - MMLIIDML



HEIDI ●●  
Length (Front to Back)  
12"-14"-16"-18"  
Code - MMLICDML-XL



**BEST-SELLING  
ITEM!**



**VIOLA** ●  
Length (Front to Back)  
14"-8"  
Code - MMMSCDML



**ROXANNE** ●  
Length (Front to Back)  
14"-8"  
Code - MMMSCDMD



**BRIDGETTE MARIE** ● ●  
Length (Front to Back)  
14"-8"  
Code - MMMSCLML



**ERIKA** ● ●  
Length (Front to Back)  
14"-6"  
Code - MMSSCDLL



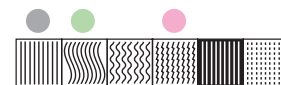
**AMBER** ● ● ● ●  
Length (Front to Back)  
8"  
Code - MMSUIDLD-TC



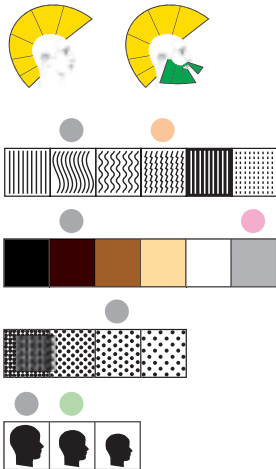
**SARAH** ●  
Length (Front to Back)  
8"  
Code - MMMUCDML



**BRITNEY** ● ●  
Length (Front to Back)  
10"  
Code - MMMUIMLL



**BEST-SELLING  
ITEM!**



GRANT ●  
Length (Front to Back)  
10"-8"-6"  
Code - MLLGIDML



PEPE ● ●  
Length (Front to Back)  
10"-8"-6"; Beard 5"  
Code - MLLGIGML-BR



SAMUEL ● ●  
Length (Front to Back)  
8"-6";  
Code -MLMGIDML



MARCUS ● ● ●  
Length (Front to Back)  
8"-6"; Beard 5"  
Code - MLMGIDMD-BRTC



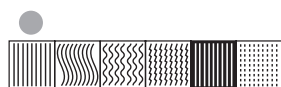
SAMUEL BEARDED ● ●  
Length (Front to Back)  
8"-6"; Beard 5"  
Code - MLMGIDML-BR

**BEST-  
SELLING  
ITEM!**

MADELINE ●  
Length (Front to Back)  
22"-16"  
Code - MRLSCLHL-XL

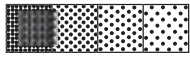
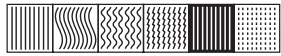


18



*The Vasiliki, an amazing  
32" length, 100% human-hair  
mannequin — destined to  
become a showpiece!*

VASILIKI ●  
Length (Front to Back)  
32"-28"  
Code - MRLSCLHL-XXL

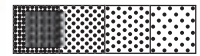
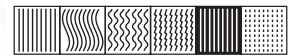


FRANCES ●  
Length (Front to Back)  
12"-8"  
Code - MRLSIDHD

*The Sonja boasts incredible styling capabilities, with its 100% Angora Yak hair.*



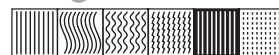
SONJA ●  
Length (Front to Back)  
8"  
Code - MRLUYWHL



LONDA ●  
Length (Front to Back)  
10"-16"  
Code - MRLIIDHD



MARITA ●  
Length (Front to Back)  
8"-14"  
Code - MRLIIDHL





*“It takes an amazing amount of practice to bring home the gold and I use only Pivot Point mannequins. They provide the greatest amount of movement and flexibility with their hand-implanted strands simulating a head of human hair. This allows me to achieve the best results when moving on to the model.”*

–Joakim Roos, International Gold Winner  
2000 World Supreme Champion

2002 – Overall Supreme Winner;  
Northern Lights, Finland

2003 – Grand Prix Scandinavian  
Championship/Norwegian Cup

2003 – Europe Championship





Length x Width	
<b>A</b> HW-CD10100	10 cm x 100 cm
<b>B</b> HW-CD2070	20 cm x 70 cm
<b>C</b> HW-CD3050	30 cm x 50 cm
<b>D</b> HW-CD4040	40 cm x 40 cm
<b>E</b> HW-CD5030	50 cm x 30 cm (2.5 cm per inch)



**BEST-  
SELLING  
ITEM!**



## 70-PIECE HAIR SWATCH KIT

HS-70

- 10 pieces, each color level

## INDIVIDUAL COLOR SWATCHES

- 12 pieces per package

White	Code - HS-12W
Grey Mix	Code - HS-12DG
Light	Code - HS-12L
Medium Light	Code - HS-12ML
Medium	Code - HS-12M
Medium Dark	Code - HS-12MD
Dark	Code - HS-12D

## 9-PIECE STRAND SET

20" (50 cm) in length  
HW-DZ-XL

- 3 pieces, Light
- 3 pieces, Medium
- 3 pieces, Dark

*matsuzaki*

***The Story of Matsuzaki***

*Matteck Matsuzaki Co., Ltd. was established and founded by Mr. Terukazu Matsuzaki in 1898, an innovative time for Japan. For over 100 years and three generations they have been producing only hairdressing shears. Over the years, many technical advancements have been made to their original design, including different materials, such as cobalt, along with the growing awareness of ergonomics.*

*Pivot Point is proud to co-brand these shears and make them available to you. Made of a special anti-corrosive steel blend, these shears will last a lifetime. All include a removable finger rest, easy-to-move tension screw and a lifetime warranty against manufacturer's defect.*



4-STAR 6"  
Code - 135M60-4STAR



4-STAR 5"  
Code - 135M50-4STAR

4-Star shears are made of a high-quality, specially made MM cobalt steel and sharpened at an acute angle, ensuring the most precise cut available. The shape of the blade is designed for maximum cutting power.



STRAIGHT 6"  
Code - 135M60



STRAIGHT 5.25"  
Code - 135M525



TEXTURIZING 6"  
Code - 135MT60

MATSUZAKI SHEARS SET  
Includes: 5.25", 6" and 6" texturizing shears, pigskin pouch and oil stick  
Code - 135MSET



ZIP jr. OIL STICK  
Code - SS200-OIL

SHEARS POUCH  
Made of pig skin; holds four pairs of shears; zippered closure  
Code - SS-200

## LEFT-HANDED



STRAIGHT 5.5"  
LEFT-HANDED  
Code - 135ML55



TEXTURIZING 5.5"  
LEFT-HANDED  
Code - 135MLT55





***Matsuzaki ROUGH shears***

*Thinning shears with an 11-groove design and a 50% cutting ratio. Achieve dramatic effects and personalized looks with flair.*

ROUGH SHEARS  
1/4" evenly spaced teeth;  
includes beautiful gift box  
and oil pen  
Code - 135R55



SHEARS POUCH  
7 1/2" x 4" x 5/8"; full-zipper  
enclosure for easy access;  
velvet interior, leatherette exterior  
holds two pairs of shears  
Code - SS-01



SAPPHIRE 55  
Code - 135SSLFR

EMERALD 60  
Code - 135E60

EMERALD 50  
Code - 135E50

The GEM shears are built to last for a lifetime of precision cutting. The unique shape and contour of these ergonomically designed shears eliminate thumb and finger stress to provide extra comfort when sculpting. Each features a removable finger rest, handsome case, oil and cloth.



Attractive,  
aluminum case,  
cloth and oil  
included with  
purchase of  
GEM shears



VANTAGE 6"  
Code - 135FRT55



VANTAGE 5 1/2"  
Code - 135FRT55



VANTAGE 5 1/2"  
LEFT-HANDED  
Code - 135FRT55



VANTAGE TEXTURIZERS  
Code - 135FRT55



SLANTAPER BENT  
6 1/2" length with 23 evenly-  
spaced, corrosion-free teeth  
on back blade; ergonomic,  
gold-plated, curved handles  
Code - 135ML60



RAZOR COMB  
Code - 212



DESIGNER RAZOR COMB  
Code - 213



DESIGNER RAZOR  
Code - 214



STRAIGHT BLADES  
Package of 60 blades  
Code - 222



NOTCHED BLADES  
Package of 10 blades  
Code - 213-RB



BARBER RAZOR  
Code - 221

FINNY BUDGET SET  
WITH POUCH  
Code - 237-3



# feather

## RAZOR

### FEATHER STYLING RAZOR

#### Freestyle Razor

- Wedge-shaped, stainless steel blade cuts hair cleanly without gouging or slicing.
- Ergonomic, one-piece handle feels like an extension of your hand.
- Exclusive blade guard protects both you and your client by eliminating unnecessary blade exposure.
- Unique clog-free design prevents hair from catching and building up between the blade and razor.

#### Refill Styling Blades

Ten per package, these blades are platinum-hardened and coated with special Teflon® resins for maximum smoothness and frictionless cutting.

#### Blade Dispenser/Disposal Case

This remarkable accessory makes changing a blade so safe you could do it in the dark! Your fingers never have to touch a blade.



#### FEATHER STYLING RAZOR KIT

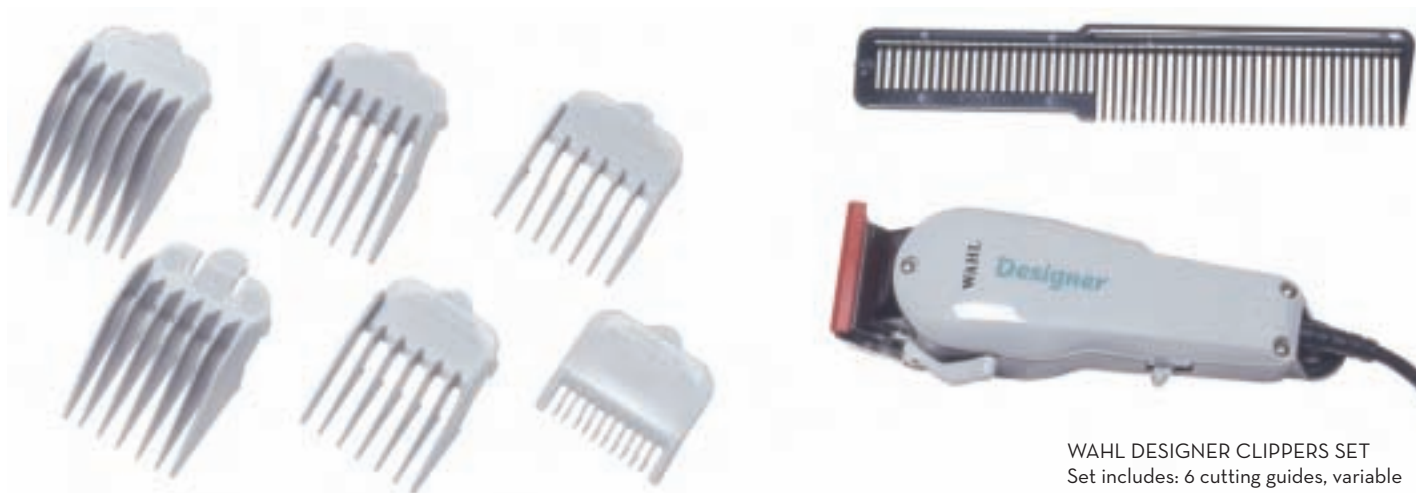
Set includes: razor handle, 10 razor blades, dispenser/disposal case and DVD  
Code - JI-IP

#### FEATHER STYLING RAZOR BLADE KIT

Set includes: 30 razor blades and dispenser/disposal case  
Code - JI-3BD

#### FEATHER STYLING RAZOR REPLACEMENT BLADES

Package of 10 blades  
Code - JI-BL



**WAHL DESIGNER CLIPPERS SET**  
 Set includes: 6 cutting guides, variable taper and texture, high-precision blades; cuts hair wet or dry  
 Code - W-8355



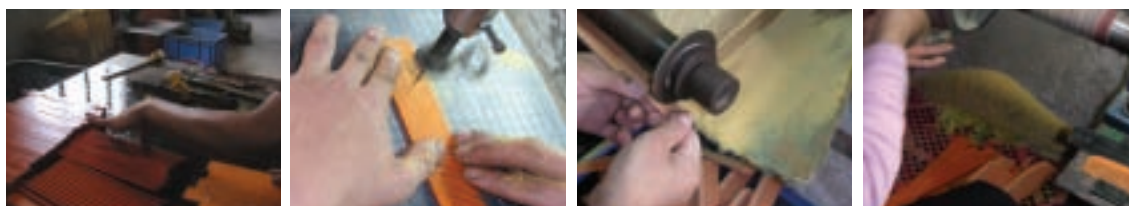
**WAHL TAPER 2000 CLIPPERS AND TRIMMER SET**  
 Set includes: 6 cutting guides, high-precision blades, cleaning brush and oil  
 Code - W-8329



**MANICURE KIT**  
 Kit includes: Fingernail clippers, toenail clippers, cuticle scissors, cuticle nippers, tweezers and a cuticle pusher all in an attractive carrying case  
 Code - MK-KIT







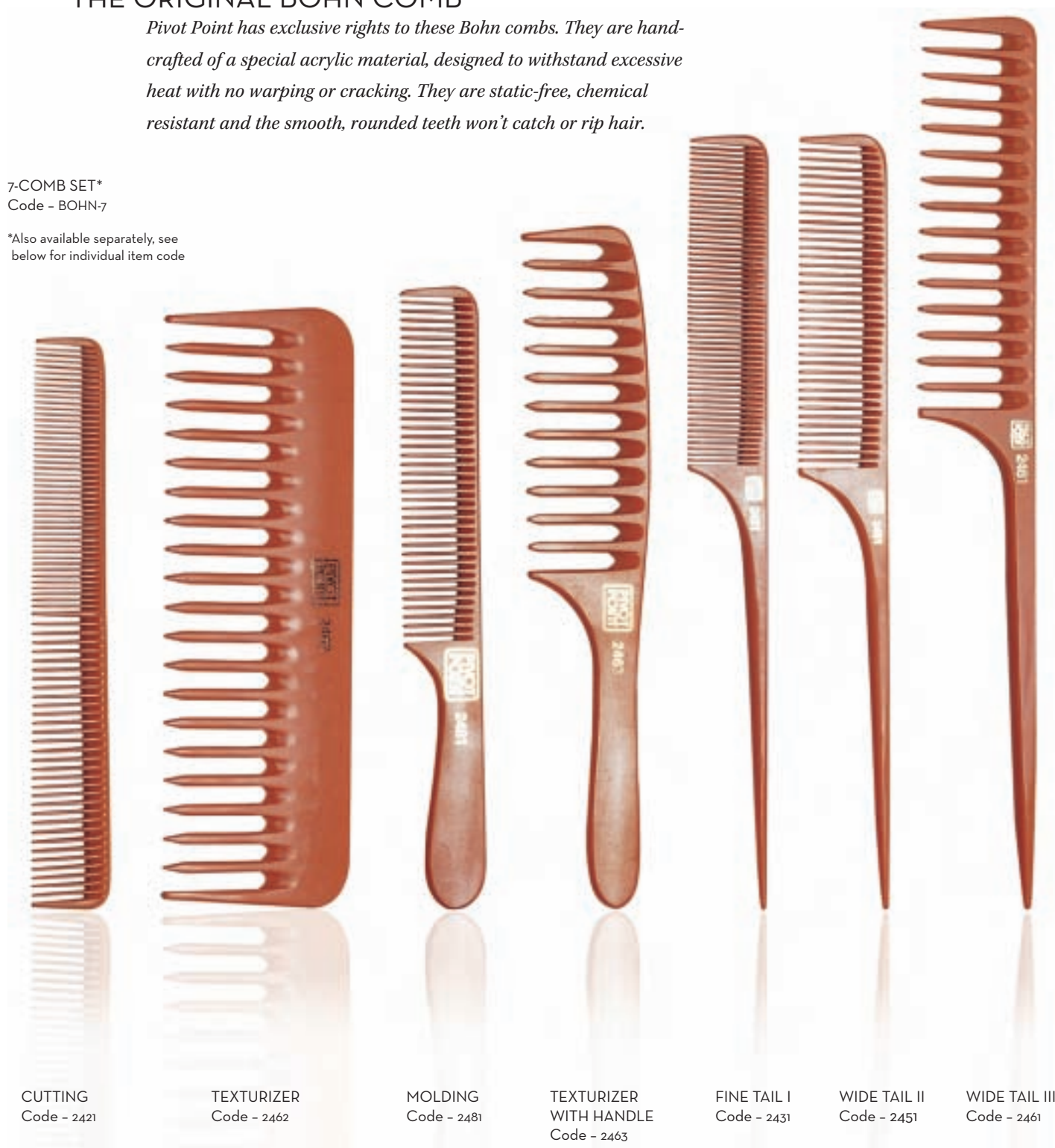
## THE ORIGINAL BOHN COMB

*Pivot Point has exclusive rights to these Bohn combs. They are hand-crafted of a special acrylic material, designed to withstand excessive heat with no warping or cracking. They are static-free, chemical resistant and the smooth, rounded teeth won't catch or rip hair.*

7-COMB SET\*  
Code - BOHN-7

\*Also available separately, see  
below for individual item code

28



CUTTING  
Code - 2421

TEXTURIZER  
Code - 2462

MOLDING  
Code - 2481

TEXTURIZER  
WITH HANDLE  
Code - 2463

FINE TAIL I  
Code - 2431

WIDE TAIL II  
Code - 2451

WIDE TAIL III  
Code - 2461

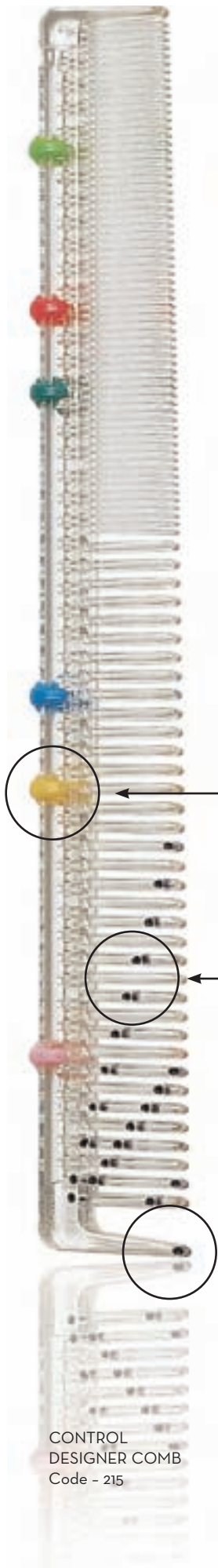
## WHAT IS THE CONTROL DESIGNER COMB?

*Designed in Germany, the Control Designer Comb exudes precision and innovation for which German engineering is well-renowned. Every aspect of this comb helps you achieve the perfect haircut, starting with the specially designed tooth at the tip of the comb for easy parting, to three projection angles (45°, 67.5° and 90°) printed directly on the comb, to movable pins allowing for precise length control.*

*From novice to elitist—this comb will provide you with the tools to create perfect cuts more efficiently.*



CROCODILE CLIPS  
Set of 6 clips  
Code - 2625



Movable pins allow for length control

Projection angles printed directly on comb for checking design lines

Specially designed tooth for perfect parts



CONTROL  
DESIGNER COMB  
Code - 215



GRAPHITE COMBS

*These fine combs are made in Italy to the standards of European craftsmanship. There are 6 versatile styles and sizes to meet any combing need. Precision design ensures “snag-free” combing with penetrating teeth to section the hair easily.*

*Made of durable graphite and resin composite, these graphite combs are chemical-resistant and static-free.*



7" CUTTING  
Code - 267G

WIDE CUTTING  
Code - 266G

8½" CUTTING  
Code - 268G

TAPER  
Code - 269G

TAIL  
Code - 265G

SHAMPOO  
Code - 264G



5-COMB SET  
Code - GRAPHITE-SET

30



7- PIECE BRUSH SET  
Code - BAB-SET



MEDIUM ROUND 2"  
Code - JBBCTR2PL



LARGE ROUND 2.5"  
Code - JBBCTR25PL



DENMAN  
Code - JBBVTS9NPL



TEASER  
Code - 255

TAIL II  
Code - 253

SHAMPOO  
Code - 250

TEXTURIZING  
Code - 257

MASTER SKETCHER  
Code - 246

CUTTING (not shown)  
Code - 247

SMALL CUSHION  
Code - 201

LARGE CUSHION  
Code - 202

DETANGLER  
Code - 206

7-ROW SKELETON  
Code - 217

7-ROW AIR FORM  
Code - 205

AIR FORM  
Code - 207



OVAL PIN CUSHION  
Code - JBBVTCPL



VENT PIN  
Code - JBBVTV9PPL



TUNNEL VENT BOAR  
Code - JBBCOVBP



PADDLE PIN CUSHION  
Code - JBBCVTNP



## RODS & ROLLERS

**VENT RODS** – Perm or set hair in traditional curl patterns with the Designer Vent Rods. Large vents and a hollow cylinder allow hair to be totally saturated by solutions – and to dry quickly. Fasten Designer Vent Rods either with picks or bands to achieve the desired tension. Available in a wide variety of lengths and diameters.

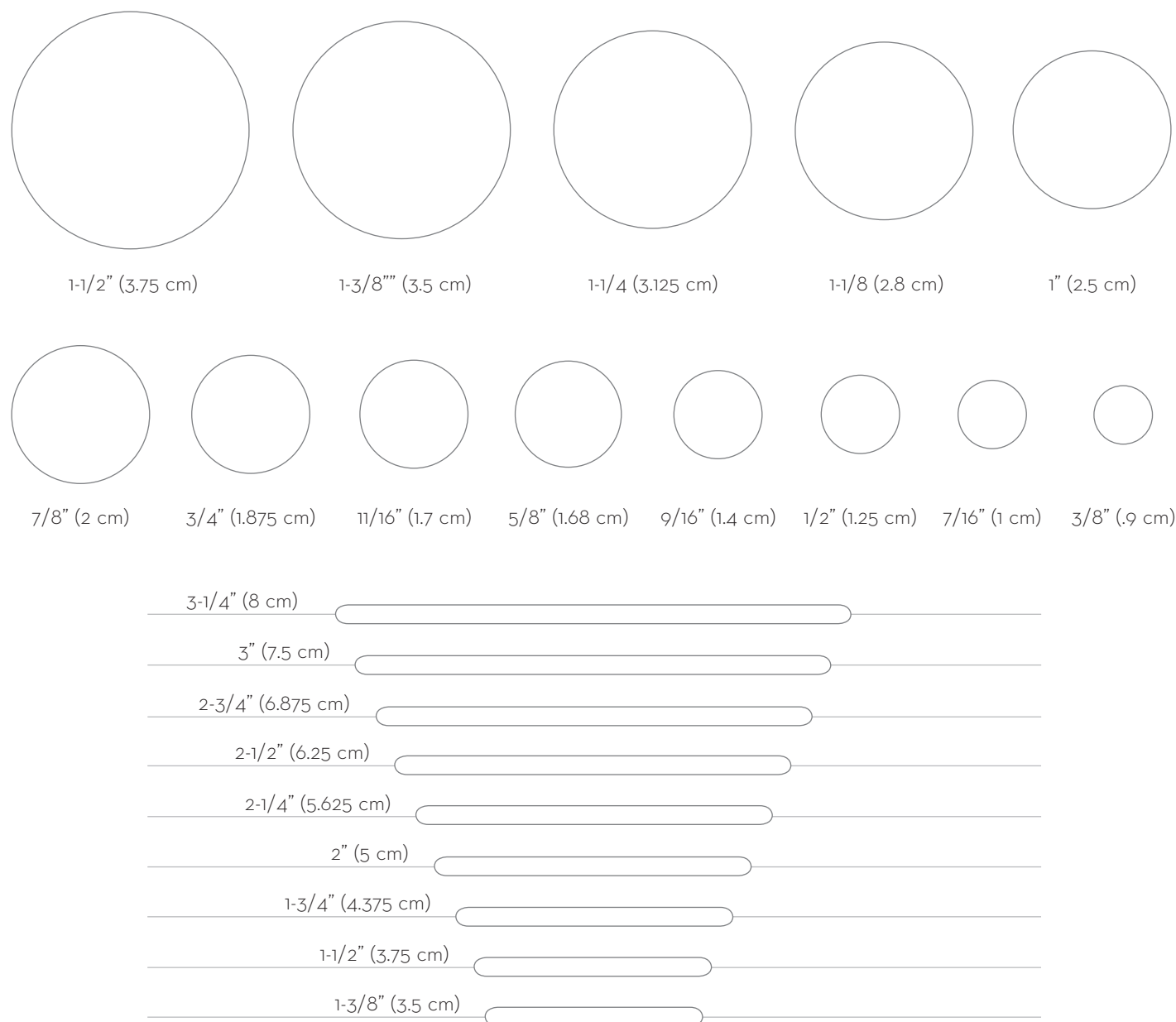
**PERM RODS** – Create cylindrical curl patterns for perms or sets with these lightweight vented rods. Each rod has a durable end cap and replaceable rubber band.

**SMOOTH CONE ROLLERS** – Specially designed to achieve luxurious volume, soft curving texture and fluid motion on fine-textured or processed hair.

**EURO CONE ROLLERS** – Create graduated volume and curved movement with these special conical rollers.

**EURO CYLINDER ROLLERS** – Achieve smooth, blended shapes with these cylindrical rollers.

Use the chart below as a guide when ordering.



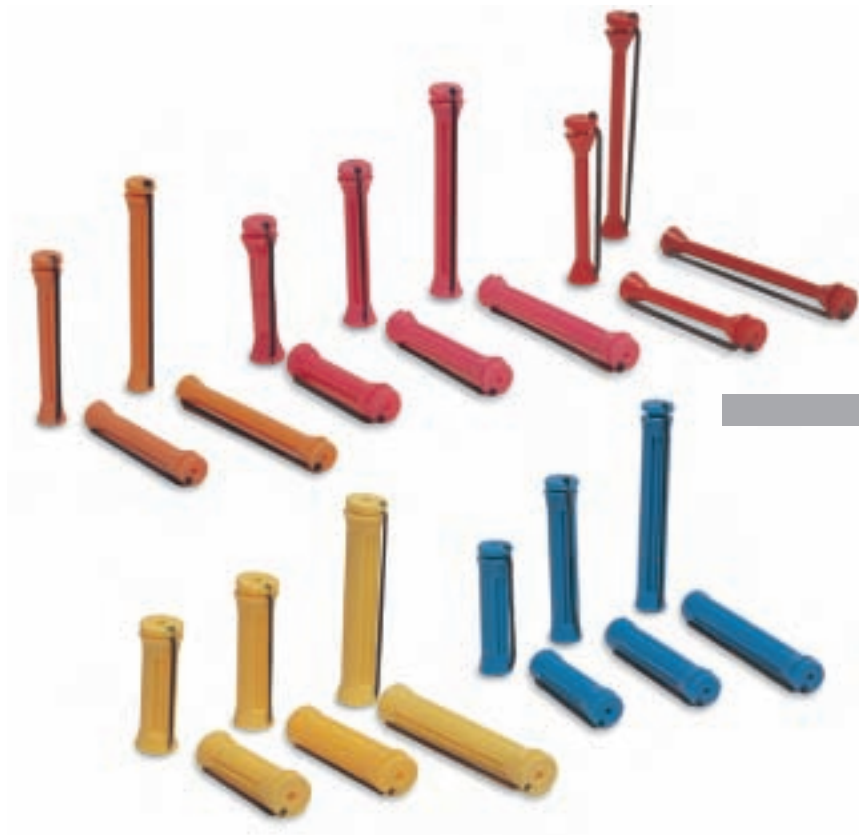


#### VENT RODS – 10 PER PACKAGE

- 9012PM – Medium Pink:  
2-3/4" length; 3/8" diameter
- 9008BL – Long Blue:  
3" length; 1/2" diameter
- 9009BM – Medium Blue:  
2-3/4" length; 1/2" diameter
- 9010BS – Short Blue:  
2-1/2" length; 1/2" diameter
- 9005YL – Long Yellow:  
3" length; 9/16" diameter
- 9006YM – Medium Yellow:  
2-3/4" length; 9/16" diameter
- 9007YS – Short Yellow:  
2-1/2" length; 9/16" diameter
- 9002LL – Long Lilac:  
3" length; 11/16" diameter
- 9003LM – Medium Lilac:  
2-3/4" length; 11/16" diameter
- 9004LS – Short Lilac:  
2-1/2" length; 11/16" diameter
- 9000GRL – Long Green:  
3" length; 7/8" diameter
- 9001GRM – Medium Green:  
2-3/4" length; 7/8" diameter

#### PERM RODS – 10 PER PACKAGE

- 402RS – Short Red:  
1-3/4" length; 3/8" diameter
- 403RL – Long Red:  
3-1/4" length; 3/8" diameter
- 406NM – Medium Orange:  
2-1/4" length; 7/16" diameter
- 407NL – Long Orange:  
3-1/4" length; 7/16" diameter
- 408PS – Short Pink:  
1-3/4" length; 1/2" diameter
- 409PM – Medium Pink:  
2-1/4" length; 1/2" diameter
- 410PL – Long Pink:  
3-1/4" length; 1/2" diameter
- 411BS – Short Blue:  
1-3/4" length; 9/16" diameter
- 412BM – Medium Blue:  
2-1/4" length; 9/16" diameter
- 413BL – Long Blue:  
3-1/4" length; 9/16" diameter
- 417YS – Short Yellow:  
1-3/4" length; 5/8" diameter
- 418YM – Medium Yellow:  
2-1/4" length; 5/8" diameter
- 419YL – Long Yellow:  
3-1/4" length; 5/8" diameter



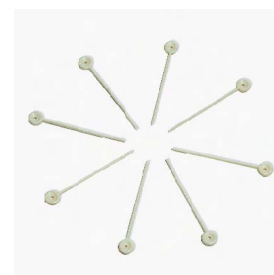
## EURO-CONE ROLLERS – 10 PER PACKAGE

- 372 – Short Green:  
1-3/4" length; 5/8" diameter
- 373 – Long Green:  
2-3/4" length; 5/8" diameter
- 374 – Short Yellow:  
1-3/4" length; 7/8" diameter
- 375 – Long Yellow:  
2-3/4" length; 7/8" diameter
- 376 – Short Orange:  
1-3/4" length; 1" diameter
- 377 – Long Orange:  
2-3/4" length; 1" diameter
- 378 – Short Pink:  
1-3/4" length; 1-1/8" diameter
- 379 – Long Pink:  
2-3/4" length; 1-1/8" diameter
- 380 – Short Purple:  
1-3/4" length; 1-1/4" diameter
- 381 – Long Purple:  
2-3/4" length; 1-1/4" diameter
- 382 – Short Blue:  
1-3/4" length; 1-3/8" diameter
- 383 – Long Blue:  
2-3/4" length; 1-3/8" diameter



## EURO-CYLINDER ROLLERS – 10 PER PACKAGE

- 369 – Short Red:  
1-1/2" length; 3/8" diameter
- 370 – Medium Red:  
2" length; 3/8" diameter
- 384 – Short Green:  
1-1/2" length; 5/8" diameter
- 385 – Medium Green:  
2" length; 5/8" diameter
- 386 – Long Green:  
2-3/4" length; 5/8" diameter
- 387 – Short Yellow (not shown):  
1-1/2" length; 3/4" diameter
- 388 – Medium Yellow (not shown):  
2" length; 3/4" diameter
- 389 – Long Yellow (not shown):  
2-3/4" length; 3/4" diameter
- 390 – Short Orange:  
1-1/2" length; 1" diameter
- 391 – Medium Orange:  
2" length; 1" diameter
- 392 – Long Orange:  
2-3/4" length; 1" diameter
- 393 – Short Pink (not shown):  
1-1/2" length; 1-1/4" diameter
- 394 – Medium Pink (not shown):  
2" length; 1-1/4" diameter
- 395 – Long Pink (not shown):  
2-3/4" length; 1-1/4" diameter
- 397 – Medium Purple:  
1-3/4" length; 1-3/8" diameter
- 398 – Long Purple:  
2-3/4" length; 1-3/8" diameter
- 399 – Short Blue:  
1-1/2" length; 1-1/2" diameter
- 400 – Medium Blue:  
2" length; 1-1/2" diameter



**PICKS**  
50 per package  
Code - 103

- The REVOLUTION SYSTEM was developed specifically to meet the unique challenges of achieving consistent spiral curl formations on long and very long hair.
- Revolution's patented four-piece interchangeable design allows hair designers to create custom-made rods of different lengths and diameters to suit the specific hair lengths and design needs of many clients.
- No longer constrained by the limitations of conventional perm rods, designers using the REVOLUTION SYSTEM can exercise greater control over the perming process to achieve precisely the results desired, opening up a whole new world of design options.

REVOLUTION SYSTEM  
40 PER SET

Code - RR40

REPLACEMENT BAND  
AND END CAPS  
40 per set

Code - RR-BAND



SMOOTH CONE ROLLER SET  
72 PIECES

4 dozen long rollers: 2-1/2" length

2 dozen short rollers: 1-3/4" length

Diameters vary from 3/4" to 1-1/2"

Code - CRA



## COLOR TOOLS



### KWICK-WAY THERMAL STRIPS

These easy-to-use thermal strips are available in two lengths; 8" and 12"; 225 sheets per package

8" Code - KWICK-8

12" Code - KWICK-12



COLOR BOWL  
Code - 6207

PALETTE  
Code - 301

STRYPYR COMB  
Code - 240



LARGE TINT BRUSH  
Code - 211B

SMALL TINT BRUSH  
Package of 10; colors may vary  
Code - 209



## CLASSROOM TOOLS

### ESTHETICS BUST

The esthetics bust is great for practicing facial techniques and make up applications. It is great in the classroom for pairing up an odd number of students for hands-on procedures. Lined drawstring bag is great for bust storage and carrying the bust from school to home.  
Code - HEAD-MASSAGE





## EDUCATOR KIT

Kit includes: 4 magnetic half-heads, 6 sets of color-coded wires (30 wires measuring 14" each set), 4 extra-long wires (36" length), 1 box of wire connectors and 1 box of pins, 1 pair of pliers, and 1 weft  
Code -3D-EKIT

## STUDENT KIT

Kit includes: 1 full head, 6 sets of color-coded wires (30 wires measuring 14" each set), 4 extra-long wires (36" length), 1 box of wire connectors and 1 box of pins, 1 pair of pliers, 1 blank design cap and 1 weft  
Code - 3D-LKIT

## COMBINATION KIT

Kit includes: 1 full head, 4 magnetic half heads, 6 sets of color-coded wires (30 wires measuring 14" each set), 4 extra-long wires (36" length), 1 storage box wire connectors and 1 box of pins, a pair of pliers, 1 set of magnetic strips, 1 blank design cap, 1 weft and 1 carrying case  
Code - 3D-EKITCOMBO

For professional hair designers, design often begins with a client's picture from a magazine. There are no instructions—just a celebrity smiling for paparazzi. Other times the hair designer begins with a client's descriptive words, like thicker, more glamorous or softer. There is only a vision, and it is the hair designer's job to analyze the vision, mentally break it down into its parts, and systematically create it.

To help learners gain this vital perspective, the Design Analysis System provides models of the head and hair—elements that a hair designer must consider when first analyzing and then creating a design. Headforms represent the human head. Color-coded magnetic strips and color-coded wires represent hair.

When the strips are in place or the wires are inserted and cut, the result is a 3-dimensional design interpretation of a style. Now the learner can analyze the design—an organized method by which form, direction, volume, texture and color have been arranged.

Eventually, learners will be able to mentally visualize their own designs, and the Design Analysis System provides the vital first step toward this goal. No other system offers this hands-on, dimensional transition between textbook and client.



BABYLISS PRO  
CERAMIX XTREME®  
BLOW DRYER  
2000 watts; 3 speeds/heat  
settings; snap-on concentrator  
nozzle  
Code - BAB2000



BABYLISS PRO  
EURO STYLER®  
BLOW DRYER  
1400 watts; 3 speeds/heat  
settings; snap-on concentrator  
and concentrator rake nozzles  
Code - BAB1400



BLOW DRYER  
1600 watts; 3 speeds/heat  
settings; snap-on concentrator  
nozzle; instant cold-shot button;  
removable filter  
Code - PV2800



BABYLISS PRO  
CERAMIX XTREME®  
DIFFUSER  
Fits all models  
Code - PV3D

*Each Gold 'n Hot iron features a multi-temperature regulator with 10 heat settings, 24K gold-plated barrel and stand.*

GOLD 'N HOT  
1/2" Marcel iron  
Code - 494



GOLD 'N HOT  
3/4" Marcel iron; corded  
Code - 495



GOLD 'N HOT  
1" Marcel iron; corded  
Code - RV100



BABYLISS PRO  
3/4" ceramic Marcel iron; multi-heat  
settings; corded, self-standing  
Code - PVC75M

FLAT IRON  
1 1/2" wide ceramic iron; multi heat  
settings; corded  
Code - PV2558





## SUPER CAPE

Lightweight, breathable nylon, hair just slides off this cape; multi-snap closure for comfortable fit; available in black (not shown) or green  
Code - 102-C (green)  
102 (black)



## COBBLER APRON

Vulcanized fabric for easy cleaning, does not stain; front pocket, tie closures  
Code - 232



## SAFARI APRON

Lightweight nylon, front pocket, tie closures and zippered section for removing length; available in black (not shown) or silver  
Code Silver - 232S-SILVER  
Black - 232S-BLACK



## SHAMPOO CAPE

Waterproof material, snap closure, available in black or silver  
Code - 231 (black)  
Code - 231-SILVER (silver)

DF™ ECOMANIA

"MANIA" T-SHIRT

100% cotton, 3/4 sleeve baseball-style tee; available in small, medium and large (runs true to size)

Code Small - DF282MANIATEE-S

Medium - DF282MANIATEE-M

Large - DF282MANIATEE-L



FRONT

BACK



FRONT

BACK

WEARABLES 41

DF™ ECOMANIA

"ECO" T-SHIRT

100% cotton, short sleeve, V-neck; available in small, medium and large (runs true to size)

Code Small - DF282ECOTEE-S

Medium - DF282ECOTEE-M

Large - DF282ECOTEE-L

## POUCHES & BAGS



**LEATHER SHEARS POUCH**  
Holds 4 pairs of shears;  
zipper closure; natural pigskin  
Code - SS200



**SHEARS POUCH**  
Holds 2 pairs of shears; zipper  
closure; man-made materials  
Code - SS-01



**I.D. POUCH**  
Nylon netting; 3 zipped  
compartments; can be worn  
around neck to hold I.D. and  
other small items  
4 1/2" x 5"  
Code - 235



**6-POCKET TOOL POUCH**  
Six exterior pockets; zipped  
interior pocket; adjustable  
strap; man-made materials  
7" x 7"  
Code - 237



**PLASTIC AMENITY BAG**  
Two clear, zipped  
compartments; waterproof  
9" x 9"  
Code - 69963



**DESIGNER AMENITY BAG**  
Roll-out flap with 3 zipped compartments;  
large interior space  
Code - 780-03

**BEST-  
SELLING  
ITEM!**

**TOOL CADDY**  
The perfect bag for all your  
tools; multiple compartments  
hold styling products, brush-  
es, combs and even thermal  
tools; bottom zips off for  
convenient carry pouch;  
shoulder strap and nylon  
cover included  
Code - 55000



**AMENITY BAG**  
Zipped outer pocket with 2  
mesh pouches; inside clear  
vinyl zipped compartments  
and hanging hook  
11" x 10"  
Code - 5011







**BACKPACK**  
Padded straps and back with 3 outer zipped pockets and 2 side mesh pockets.  
17" x 12" x 9"  
Code - 5615



**BACKPACK ON WHEELS**  
Padded, hide away straps with outer flap to cover wheels when worn on back; compartmentalized interior space; 3 outer zipped pockets, 2 side mesh pockets  
20" x 9" x 14"  
Code - 5617

**BEST-SELLING ITEM!**



**MESSENGER BAG**  
Code - 5611



**BACKPACK**  
Code - 5612



**COMPUTER BRIEFCASE**  
Code - 5609



**CARRYALLS** 43





**TRAVEL CASE ON WHEELS**  
Two interior compartments, one soft-sided, the other hard-backed; telescopic handle opens to 21"; perfect for carry-on luggage  
20" x 14" x 6-1/2"  
Code - 5610

## SMALL DUFFEL ON WHEELS

Two zipped end and front pockets; padded strap; telescopic handle opens to 21".  
22" x 13" x 12"  
Code - 5600



## LARGE DUFFEL ON WHEELS

Two zipped end and front pockets; padded strap; telescopic handle opens to 21"  
28" x 15" x 14"  
Code - 5605



## LUGGAGE ON WHEELS

Two outer front-zipped pockets; interior space has luggage straps; telescopic handle opens to 21"  
17" x 10" x 27"  
Code - 5607



**BEST-  
SELLING  
ITEM!**

**TRIPOD SKIRT**  
The tripod skirt is equipped  
with holders and pockets for  
tools, brushes and styling  
products; fits all tripods  
Code - TRI-SKIRT



CARRYALLS 45



Rolls up for a convenient  
travel option

Tools & tripod not included



**METAL ADJUSTABLE  
HOLDER**  
Features 180° tilt and 360°  
swivel  
Code - 165N



**PLASTIC ADJUSTABLE  
HOLDER**  
Two extension bars included  
Code - 163W

**ADDITIONAL EXTENSION  
BAR**  
Code - 163W-B



**PLASTIC SWIVEL HOLDER**  
Attaches to nearly any  
surface, great for students  
Code - 093N



**TITAN TRIPOD**  
Telescopic legs with quick-release latches for easy set-up;  
center brace supports for maximum stability; cobalt grey  
finish; carrying case included  
Code - TITAN

**BEST-  
SELLING  
ITEM!**

#### TRAVELER TRIPOD

Lightweight, compact and easy to transport using carrying case (included); telescopic legs with quick-release latches for easy set-up  
Code - TRI-93



HAIR 47

#### UNIVERSAL TRIPOD

Telescopic legs with large, locking collars; bubble level; center brace supports for maximum stability; carrying case included  
Code - UNIVERSAL



### HOURS OF OPERATION

If you would like product and pricing information, our Pivot Point sales team is available to assist you 8 hours a day, 5 days a week. For order status information or other assistance with an order you have already placed with the Pivot Point Store, please contact the Pivot Point sales department at 800-886-4247 between the hours of 8:00 a.m. and 5:00 p.m. Central Standard Time or email [info@pivot-point.com](mailto:info@pivot-point.com).

### SHIPPING DETAILS

The estimated shipment date on your order is based on product availability, payment processing time, and warehouse processing time; it does not include transit time. Payment processing will not begin until we receive all information needed and full payment (or a full authorization, in the case of credit card, phone and account orders). Orders placed on the weekend or a holiday will not begin payment processing until the next business day. Business days are Monday through Friday, excluding Federal holidays.

Note: Title and risk of loss to all products will pass to you on delivery.

### PIVOT POINT'S RETURN POLICY

#### **Hair Products**

Hair may be returned up to 30 days after purchase if in original packaging and original condition.

Hair is warranted to the original purchaser for the period of one (1) year from original date of purchase, under normal use and service, against defective material or workmanship. During the warranty period, Pivot Point will replace the hair medium when returned with a copy of the original receipt, a copy or the original of the tag containing the lot number and date, and a letter describing the defect.

#### **Books & DVDs**

Unopened books may be returned up to 30 days after purchase.

#### **Kits**

Kits may be returned up to 30 days after purchase if in original packaging and original condition. Any items missing from the kit will not be credited or replaced. If any item is missing, you will be charged a la carte list price. There will also be a 25% restocking fee for kit returns.

#### **Electrical Products**

For products produced by companies other than Pivot Point International, please see the manufacturer's warranty information enclosed in the package and contact the manufacturer directly for further information. Pivot Point International is a distributor of these products and will not provide warranty or support for third-party products.

#### **Manufacturer's Defect Policy**

Defective goods must be reported and returned for a replacement within the first 30 days from the date of invoice.

#### **Restocking Fees**

All returned items are subject to a 25% restocking fee. To ensure prompt and efficient handling of your returns, you must obtain a Return Authorization Number (RA#) from Pivot Point International Customer Support at 800.886.4247. The RA number must appear on the shipping carton or returns will be refused.

Pivot Point is not responsible and will not assume freight charges incurred in the return of items to our warehouse or for reshipping new or replacement items unless goods are deemed damaged due to shipment or originally defective.

### OTHER TERMS AND CONDITIONS

Pivot Point is not responsible for typographical errors. Pivot Point reserves the right to change the terms and conditions of sale at the Pivot Point Store at any time. All sales at the Pivot Point Store are governed by Illinois law. No Pivot Point employee or agent has the authority to vary any of the Pivot Point Store's policies or the terms and conditions governing any sale.